



MLS 4200953 Land

**\$129,500**

89.69 acres  
Raw Land

0 E Oak Point Road  
Cass Lake MN 56633

(Active)

**Description:**

Rare opportunity to own Potlatch land less than a mile from Leech Lake and surrounded by thousands of acres of public land. The land is within the Bowstring State Forest and Chippewa National Forest boundaries, and a Leech Lake boat access is about 3 miles away. Wetland complex along the north side. Excellent wildlife habitat in a superb whitetail deer, bear, and upland bird hunting area. Maturing aspen could be harvested in about 10 years for potential future timber income.

**Additional Details:**

Lot Acres	89.690
Topography	Level,Low Land
Development Status	Raw Land
School District	115 - Cass Lake-Bena Schools
Taxes	\$492
Taxes with Assessments	\$492
Tax Year	2020

**Additional Features:**

**Improvements** : None **Land Inclusions** : None **Lot Description** : Tree Coverage - Light **Topography** : Level, Low Land **Pasture Acres** : 0.000  
**On Site Utilities** : None

**Driving Directions:**

From Walker, north on State Hwy 371 approximately 13 1/2 miles. Right/east on Oak Point Rd NW approx 7 1/2 miles. Left onto E Oak Point Rd approx 420 feet into the NW corner of the subject prop.



Listed By:  
Close-Converse Commercial Prop

Affinity Real Estate Inc. participates in the Regional Multiple Listing Service of Minnesota, Inc Broker Reciprocity (sm) program, allowing us to display other broker's listings on our website. All properties are subject to prior sale, change or withdrawal.



**Call Affinity Real Estate**

**218-237-3333**

**info@affinityrealestate.com**



**Affinity Real Estate - 600 Park Avenue South - Park Rapids MN 56470**



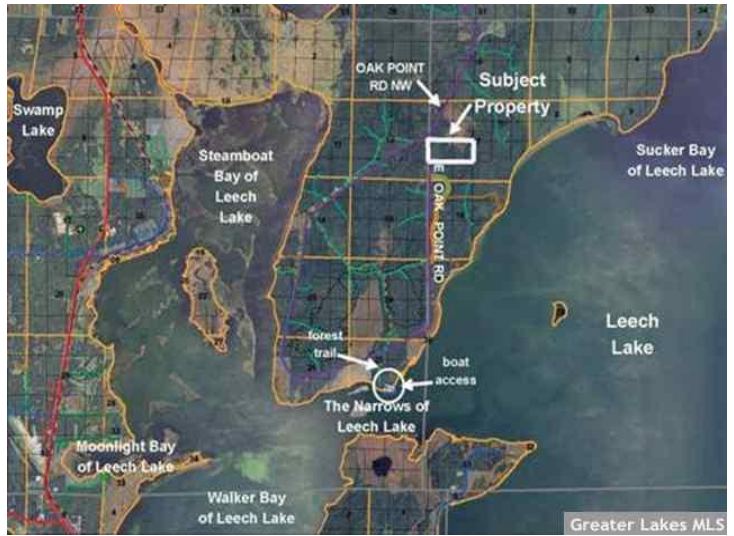
Greater Lakes MLS



Greater Lakes MLS



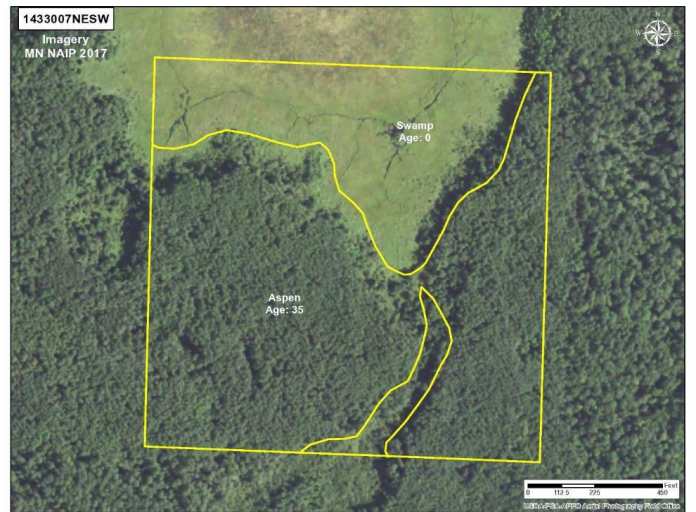
Greater Lakes MLS



Greater Lakes MLS



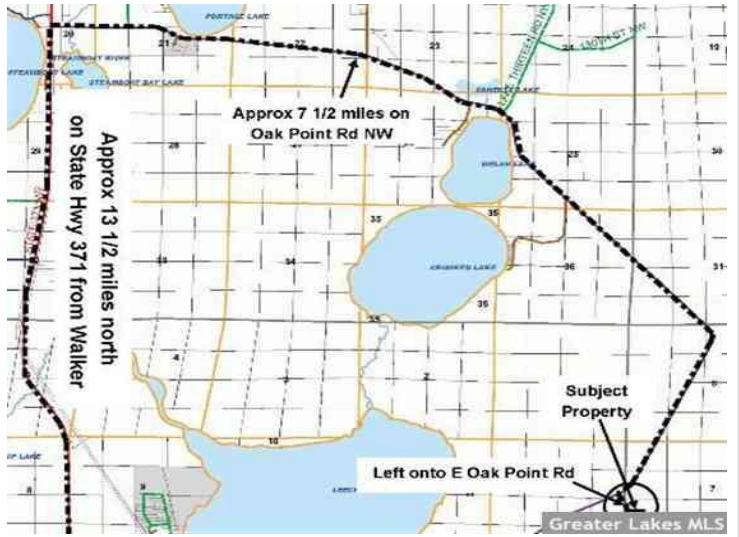
Greater Lakes MLS



website: [www.AffinityRealEstate.com](http://www.AffinityRealEstate.com) | email: [info@affinityrealestate.com](mailto:info@affinityrealestate.com) | office: 218-237-3333 | fax:218-237-3377



**\$129,500**  
 MLS 4200953 Land  
 0 E Oak Point Road  
 Cass Lake MN 56633



website: [www.AffinityRealEstate.com](http://www.AffinityRealEstate.com) | email: [info@affinityrealestate.com](mailto:info@affinityrealestate.com) | office: 218-237-3333 | fax: 218-237-3377



**\$129,500**  
 MLS 4200953 Land  
 0 E Oak Point Road  
 Cass Lake MN 56633