



MLS 4297823 Lakehome

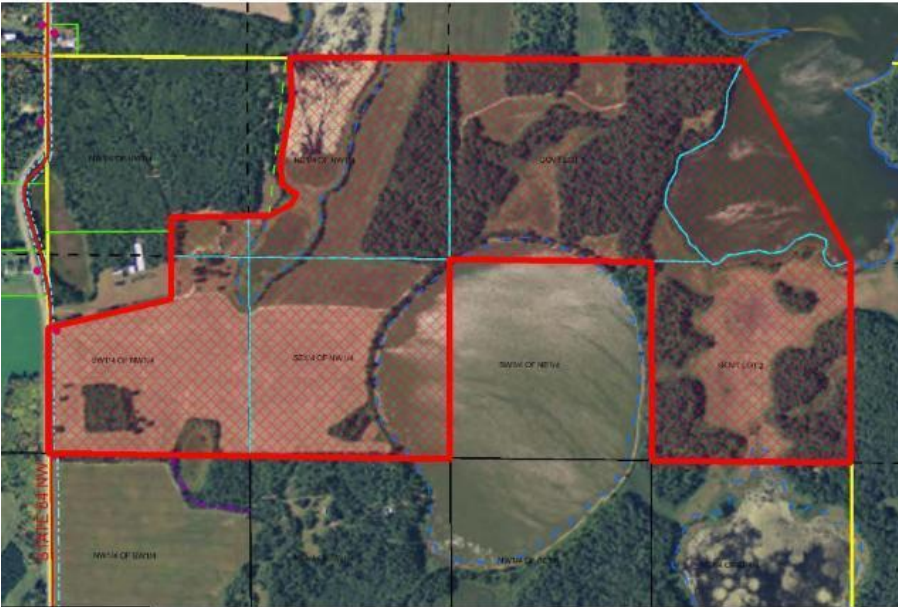
\$450,000

1,296 sq ft
4 bedrooms
1 baths

1894 State 84
Backus MN 56435

Waterfront: Rush Lake

(Pending)



© RMLSMN

Description:

Hunter's Paradise, over 200 acres of land, wooded, and open with deer, bear, turkey's and ducks. the acreage borders 2 semi private, registered with DNR lakes, with lotza fish, over 1/2 mile of level elevation lakehore, good beach for swimming. Lakes are surrounded by State land and Railroad land. Property also has a 3 bedroom farm house and Barn. House and barn have steel roofs and siding. Come and enjoy nature, located on State Hwy 84. priced at \$450,000.

Additional Details:

Year Built	1930
Lot Acres	200.860
Lot Dimensions	1640 x 1640
Garage Stalls	4
School District	2174 - Pine River-Backus
Taxes	\$590
Taxes with Assessments	\$656
Tax Year	2017

Additional Features:

Fuel: Electric, Oil **Heat:** Forced Air

Driving Directions:

371 North to 44 (Before Pine River), follow 44 which connects to State Highway 84 (Go past Highway 87) continue North, past Lake Ada to 1894 State Highway 84.



Listed By:
Weichert REALTORS Tower Properties

Affinity Real Estate Inc. participates in the Regional Multiple Listing Service of Minnesota, Inc Broker Reciprocity (sm) program, allowing us to display other broker's listings on our website. All properties are subject to prior sale, change or withdrawal.



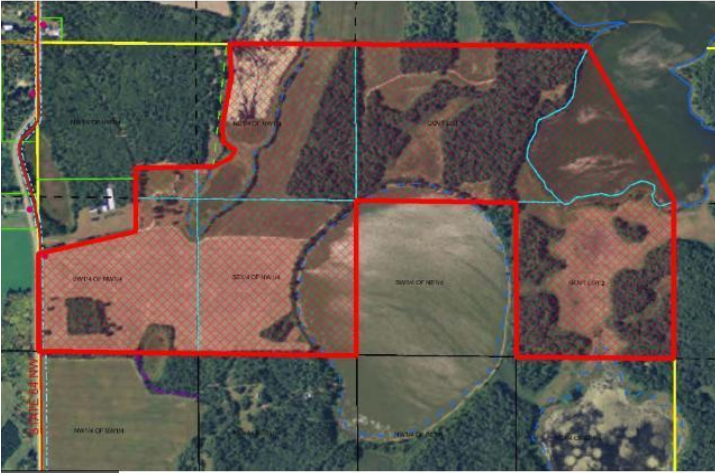
Call Affinity Real Estate

218-237-3333

info@affinityrealestate.com



Affinity Real Estate - 600 Park Avenue South - Park Rapids MN 56470



© RMLSMN



Greater Lakes MLS



Greater Lakes MLS



Greater Lakes MLS



Greater Lakes MLS

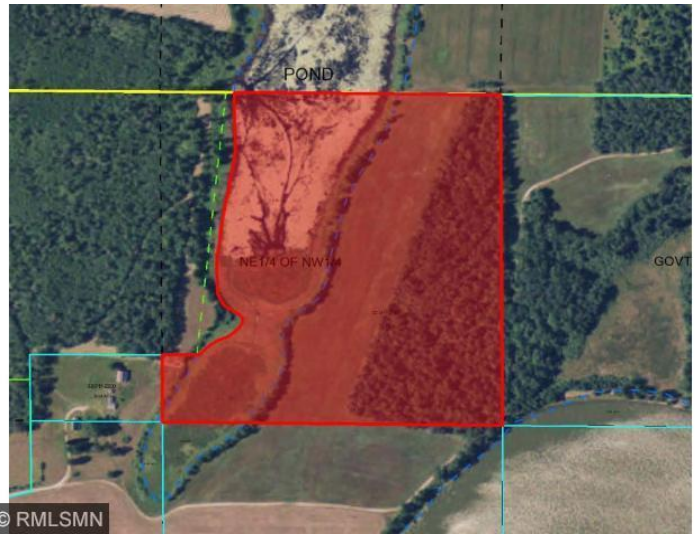
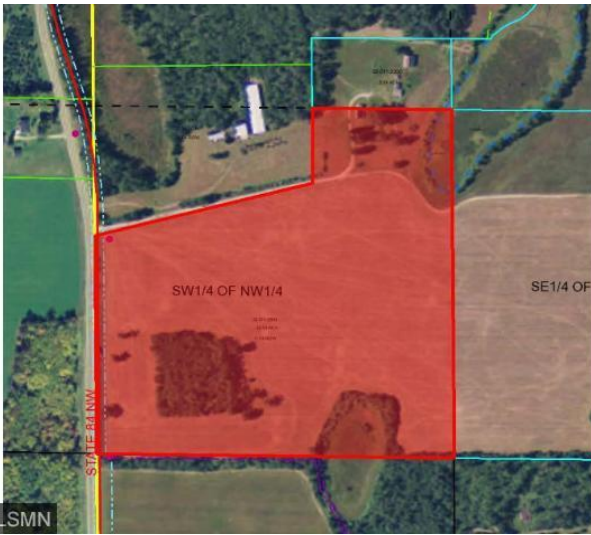


© RMLSMN

website: www.AffinityRealEstate.com | email: info@affinityrealestate.com | office: 218-237-3333 | fax: 218-237-3377



\$450,000
MLS 4297823 Lakehome
1894 State 84
Backus MN 56435



website: www.AffinityRealEstate.com | email: info@affinityrealestate.com | office: 218-237-3333 | fax:218-237-3377



\$450,000
MLS 4297823 Lakehome
1894 State 84
Backus MN 56435