



MLS 4594103 Land

**\$115,500**

80.00 acres  
Raw Land

0 County Road 109  
Menahga MN 56464

(Active)

**Description:**

Potlatch land just outside Badoura State Forest south of Akeley. Generally-level upland w/ touch of wetland in the south. Timber could possibly be thinned or harvested within 5-10 years for potential timber income. Power line along south boundary offers great shooting lanes for deer hunting. Good access via gravel road less than 3 miles west of State Hwy 64. Over 1,000 acres of public land adjoining east and numerous snowmobile trails in the area.

**Additional Details:**

Lot Acres	80.000
Topography	Level,High Ground
Development Status	Raw Land
School District	113 - Walker-Hackensack-Akeley
Taxes	\$762
Taxes with Assessments	\$762
Tax Year	2019

**Additional Features:**

**Improvements :** None **Land Inclusions :** None **Lot Description :** Tree Coverage - Medium **Topography :** Level, High Ground **Pasture Acres :** 0.000 **On Site Utilities :** None

**Driving Directions:**

From State Hwy 34 & State Hwy 64 in Akeley, south on State Hwy 64 (Marie Ave SE) 13 miles. Right on CR 109 approx 2 1/4 miles to the NE corner. (Prop is across rd from address #28692 & 28606).



Listed By:  
Close-Converse Commercial Prop

Affinity Real Estate Inc. participates in the Regional Multiple Listing Service of Minnesota, Inc Broker Reciprocity (sm) program, allowing us to display other broker's listings on our website. All properties are subject to prior sale, change or withdrawal.



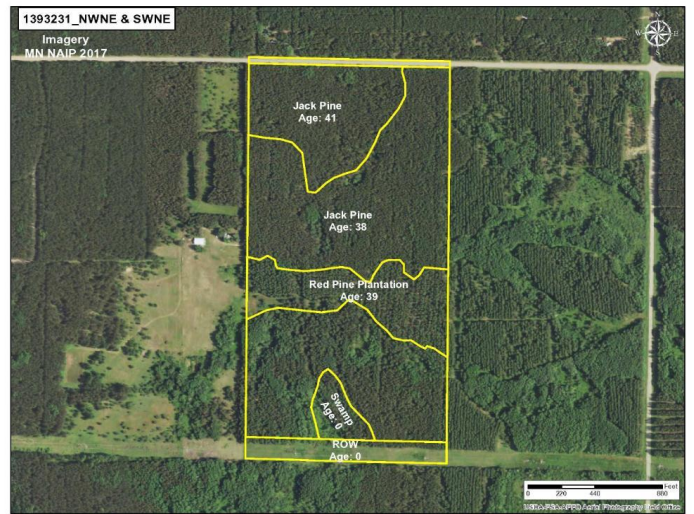
**Call Affinity Real Estate**

**218-237-3333**

**info@affinityrealestate.com**



**Affinity Real Estate - 600 Park Avenue South - Park Rapids MN 56470**



website: [www.AffinityRealEstate.com](http://www.AffinityRealEstate.com) | email: [info@affinityrealestate.com](mailto:info@affinityrealestate.com) | office: 218-237-3333 | fax: 218-237-3377



**\$115,500**  
 MLS 4594103 Land  
 0 County Road 109  
 Menahga MN 56464