



MLS 4897432 Land

\$14,500

2.52 acres
Subdivided

20 Fenwick Circle
Park Rapids MN 56470

(Active)

Description:

Country Estate Living - If you are looking to build your dream home or plan for the future, here is a good start. Take your pick from multiple lots ranging in size from 2.25 to 4.65 acres and prices from \$14,500 to \$18,900.

Additional Details:

Lot Acres	2.520
Topography	Rolling
Development Status	Subdivided
School District	309 - Park Rapids
Taxes	\$150
Taxes with Assessments	\$150
Tax Year	2018

Additional Features:

Improvements : Unimproved Streets **Land Inclusions** : Survey, Platted **Topography** : Rolling **Pasture Acres** : 0.000 **On Site Utilities** : None

Driving Directions:

From 71/34 go 2.5 miles to R on CR 18, go 1.1 miles turn L on Fenwick Circle. Follow circle to marked lots.



Listed By:
Affinity Real Estate Inc.

Affinity Real Estate Inc. participates in the Regional Multiple Listing Service of Minnesota, Inc Broker Reciprocity (sm) program, allowing us to display other broker's listings on our website. All properties are subject to prior sale, change or withdrawal.



Call Affinity Real Estate

218-237-3333

info@affinityrealestate.com



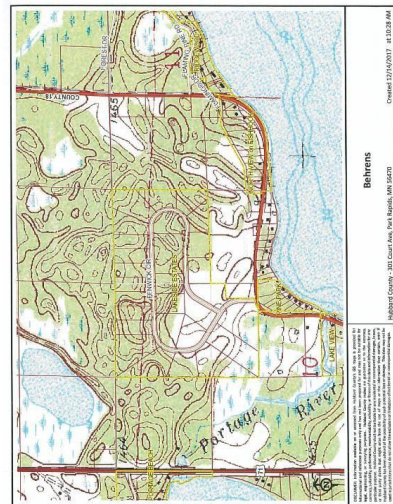
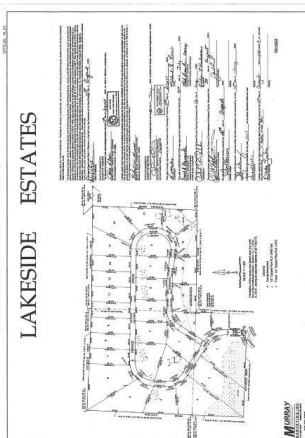
Affinity Real Estate - 600 Park Avenue South - Park Rapids MN 56470



Disclaimer: This report is based on an aerial photograph of the subject property and is not intended to be used as a substitute for a professional survey. The information contained herein is for informational purposes only and should not be relied upon for any legal or financial purposes. The information contained herein is not intended to be used as a substitute for a professional survey. The information contained herein is for informational purposes only and should not be relied upon for any legal or financial purposes. The information contained herein is not intended to be used as a substitute for a professional survey. The information contained herein is for informational purposes only and should not be relied upon for any legal or financial purposes.

Lot 20

Hubbard County - 303 Court Ave, Park Rapids, MN 56470
Created 12/21/2017 at 03:42 PM



website: www.AffinityRealEstate.com | email: info@affinityrealestate.com | office: 218-237-3333 | fax: 218-237-3377



\$14,500
 MLS 4897432 Land
 20 Fenwick Circle
 Park Rapids MN 56470