



MLS 5255260 Land

\$94,900

80.00 acres

0 189th
Sebeka MN 56477

(Active)

Description:

A1392 80 acres, mix of pasture, woods and lowland, with the Cat River flowing through it. In an excellent area for Whitetail Deer, Turkey and Bear.

Additional Details:

Lot Acres	80.000
School District	820 - Sebeka
Taxes	\$1,090
Taxes with Assessments	\$1,090
Tax Year	2020

Additional Features:

Lot Description : Tree Coverage - Light

Driving Directions:

From Hwys. 71/34 in Park Rapids, go S on 71 to Sebeka. Go Right on #227 5.4 miles to a left onto 189th Ave for .5 miles. Property is to the North East of the intersection.



Listed By:
Coldwell Banker Clack Dennis

Affinity Real Estate Inc. participates in the Regional Multiple Listing Service of Minnesota, Inc Broker Reciprocity (sm) program, allowing us to display other broker's listings on our website. All properties are subject to prior sale, change or withdrawal.



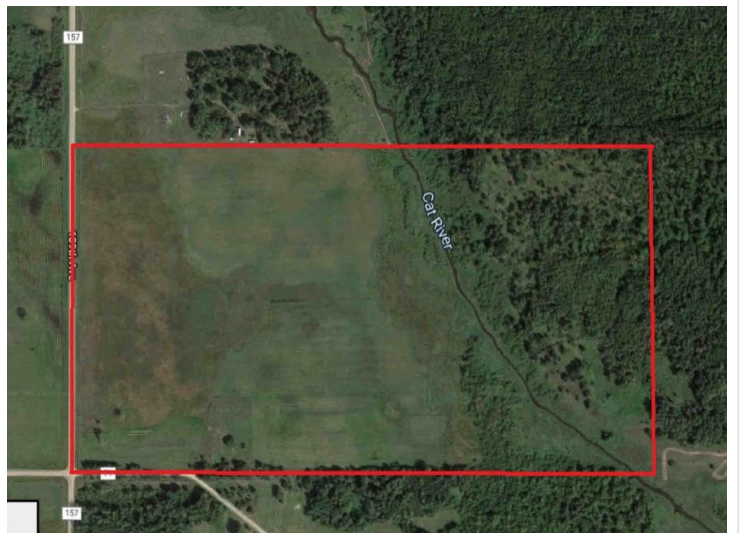
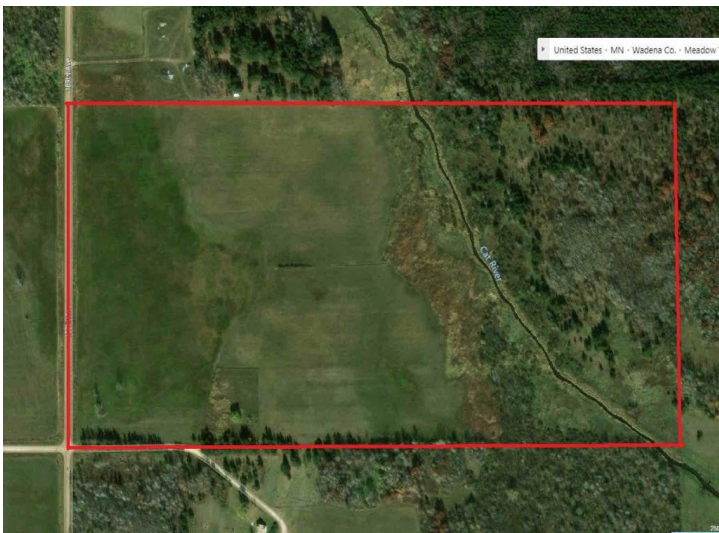
Call Affinity Real Estate

218-237-3333

info@affinityrealestate.com



Affinity Real Estate - 600 Park Avenue South - Park Rapids MN 56470



website: www.AffinityRealEstate.com | email: info@affinityrealestate.com | office: 218-237-3333 | fax:218-237-3377



\$94,900
MLS 5255260 Land
0 189th
Sebeka MN 56477



website: www.AffinityRealEstate.com | email: info@affinityrealestate.com | office: 218-237-3333 | fax:218-237-3377



\$94,900
MLS 5255260 Land
0 189th
Sebeka MN 56477