

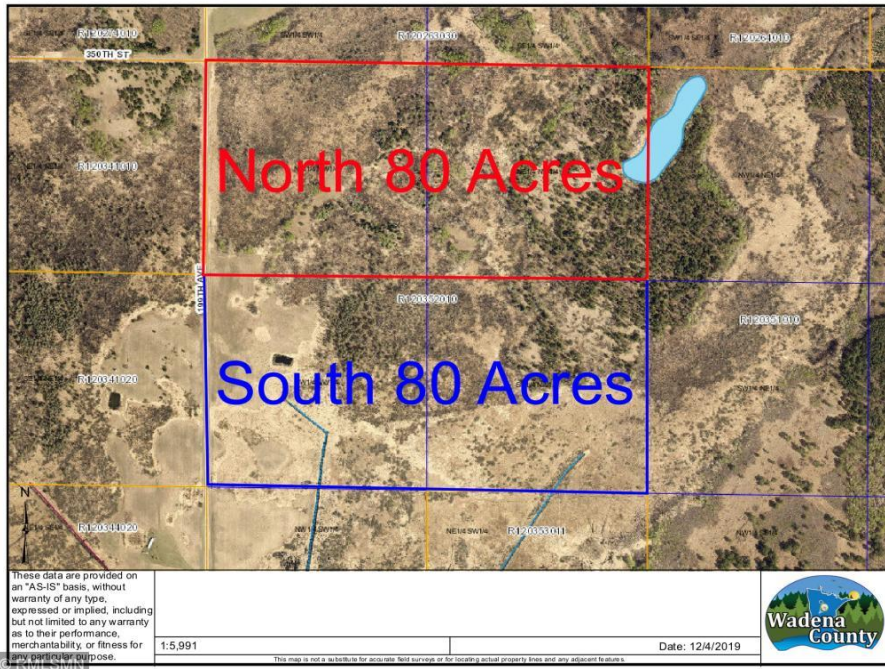


MLS 5337229 Land

**\$89,900**

80.00 acres  
Raw Land

20098 340th Street  
Menahga MN 56464



(Active)

**Description:**

80 acres of hunting acreage. Approximately 40 acres wooded. Access off of 199th Ave and borders 440 acres of state land to the East. Bordering 80 acres to the North also for sale.

**Additional Details:**

Lot Acres	80.000
Topography	Rolling,Low Land,High Ground
Development Status	Raw Land
School District	821 - Menahga
Taxes	\$3,148
Taxes with Assessments	\$3,208
Tax Year	2019

**Additional Features:**

**Improvements** : None **Land Inclusions** : Abstract, For Sale Sign **Lot Description** : Tree Coverage - Medium, Property Adjoins Public Land  
**Topography** : Rolling, Low Land, High Ground **Pasture Acres** : 40.000 **Soil Type** : Sand, Clay **On Site Utilities** : None

**Driving Directions:**

From Hwy 71/34 in Park Rapids, go South on Hwy 71, turn left onto 87, turn right onto County 6, continue onto Hubbard Road, turn left onto 340th St, turn left onto 199th Ave, property will be on right.



Listed By:  
RE/MAX First Choice

Affinity Real Estate Inc. participates in the Regional Multiple Listing Service of Minnesota, Inc Broker Reciprocity (sm) program, allowing us to display other broker's listings on our website. All properties are subject to prior sale, change or withdrawal.



Call Affinity Real Estate

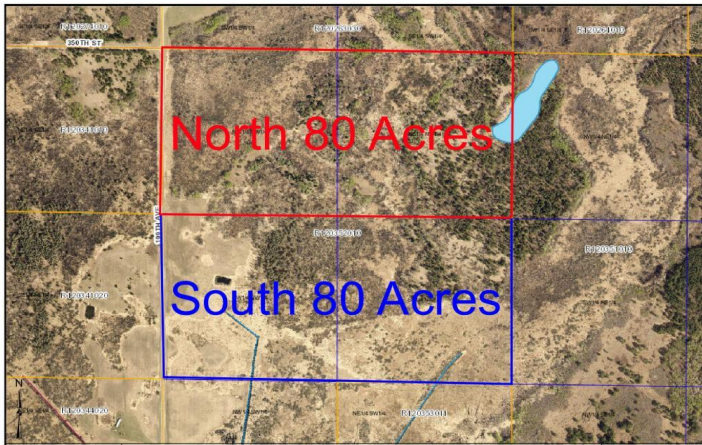
**218-237-3333**

[info@affinityrealestate.com](mailto:info@affinityrealestate.com)



Affinity Real Estate - 600 Park Avenue South - Park Rapids MN 56470






These data are provided on an "AS-IS" basis, without warranty of any type, expressed or implied, including but not limited to any warranty as to their performance, merchantability, or fitness for any particular purpose.

15,991

Date: 12/4/2019

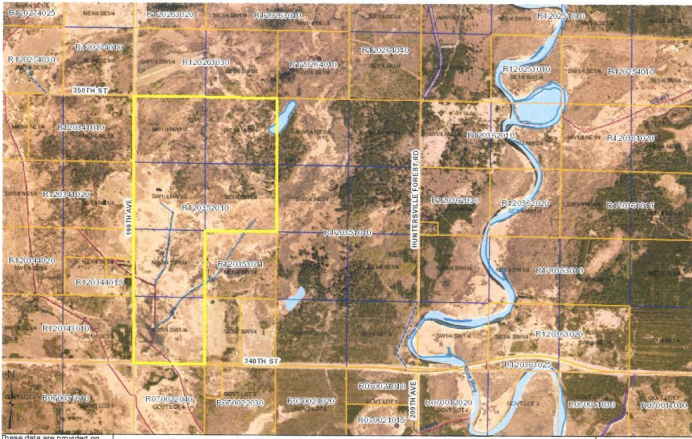



website: [www.AffinityRealEstate.com](http://www.AffinityRealEstate.com) | email: [info@affinityrealestate.com](mailto:info@affinityrealestate.com) | office: 218-237-3333 | fax:218-237-3377



**\$89,900**  
 MLS 5337229 Land  
 20098 340th Street  
 Menahga MN 56464

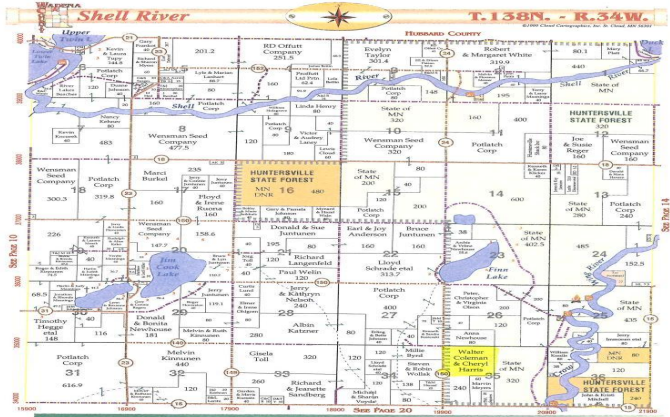




These data are provided on an "AS-IS" basis, without warranty of any type, expressed or implied, including but not limited to any warranty as to their performance, merchantability, or fitness for any particular purpose.

1:14,710

Date: 11/14/2019



**ALBERS REALTY**

Garth & Peggy Albers  
Owners/Broker

Highway 10 East  
561 Ash Avenue N.E.  
Wadena, MN 56482

Buying, Selling, "Thinking" Call Albers!!  
e-mail: albers@wadena.net  
Website: www.albersrealty.com

Office 218-631-2585 Home 218-462-2585 Fax 218-631-2587

© RMLSMN

© RMLSMN

website: [www.AffinityRealEstate.com](http://www.AffinityRealEstate.com) | email: [info@affinityrealestate.com](mailto:info@affinityrealestate.com) | office: 218-237-3333 | fax: 218-237-3377



**\$89,900**  
MLS 5337229 Land  
20098 340th Street  
Menahga MN 56464