



Not a legal document. For Reference Use Only. Accuracy is not guaranteed.



MLS 5351983 Land

\$90,000

15.94 acres

0 King Ave
Wadena MN 56482

(Pending)

Description:

.A very unique parcel, located at the edge of the Wadena City , in OTTER TAIL County. Not in the City limits. Very hidden, secluded just out of town!

Additional Details:

Lot Acres	15.940
School District	2155 - Wadena-Deer Creek
Taxes	(unreported)
Taxes with Assessments	(unreported)
Tax Year	2019

Additional Features:

Lot Description : Tree Coverage - Medium

Driving Directions:

Front the intersection of US HWY 10 & 71; South on 71 to King Ave SW, West on King Ave SW approximately 13 blocks to Subject on right.



Listed By:
The Gores Company

Affinity Real Estate Inc. participates in the Regional Multiple Listing Service of Minnesota, Inc Broker Reciprocity (sm) program, allowing us to display other broker's listings on our website. All properties are subject to prior sale, change or withdrawal.



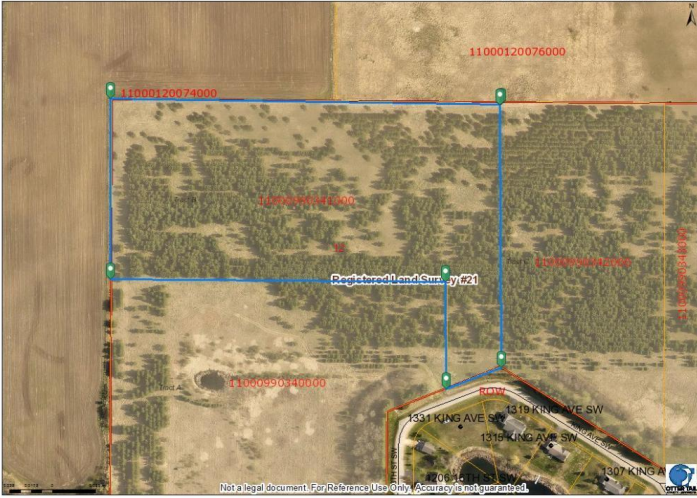
Call Affinity Real Estate

218-237-3333

info@affinityrealestate.com



Affinity Real Estate - 600 Park Avenue South - Park Rapids MN 56470



website: www.AffinityRealEstate.com | email: info@affinityrealestate.com | office: 218-237-3333 | fax:218-237-3377



\$90,000
MLS 5351983 Land
0 King Ave
Wadena MN 56482