



MLS 5632944 Lakeland

\$199,000

0.94 acres

0 Deer Crossing Drive
Park Rapids MN 56470

Waterfront: Long Lake

(Active)

Description:

Perfect sand beach and stunning sunset views on the east side of Long Lake. Privacy galore, with 196 ft. of frontage on one of the areas most popular lakes. A perfect spot to build your cabin or dream home.

Additional Features:

Driving Directions:

From Hwys. 71/34 in Park Rapids, East on Hwy. 34 to County 20, right on County 20 to 170th St., right on 170th St. to a right on Deer Crossing Dr. & follow to property.



Listed By:
Wolff & Simon Real Estate

Affinity Real Estate Inc. participates in the Regional Multiple Listing Service of Minnesota, Inc Broker Reciprocity (sm) program, allowing us to display other broker's listings on our website. All properties are subject to prior sale, change or withdrawal.



Call Affinity Real Estate

218-237-3333

info@affinityrealestate.com



Affinity Real Estate - 600 Park Avenue South - Park Rapids MN 56470



Greater Lakes MLS



Greater Lakes MLS



Greater Lakes MLS



Greater Lakes MLS



Greater Lakes MLS



Greater Lakes MLS

website: www.AffinityRealEstate.com | email: info@affinityrealestate.com | office: 218-237-3333 | fax:218-237-3377



\$199,000
MLS 5632944 Lakeland
0 Deer Crossing Drive
Park Rapids MN 56470



Greater Lakes MLS



Greater Lakes MLS



Greater Lakes MLS



Greater Lakes MLS



Greater Lakes MLS

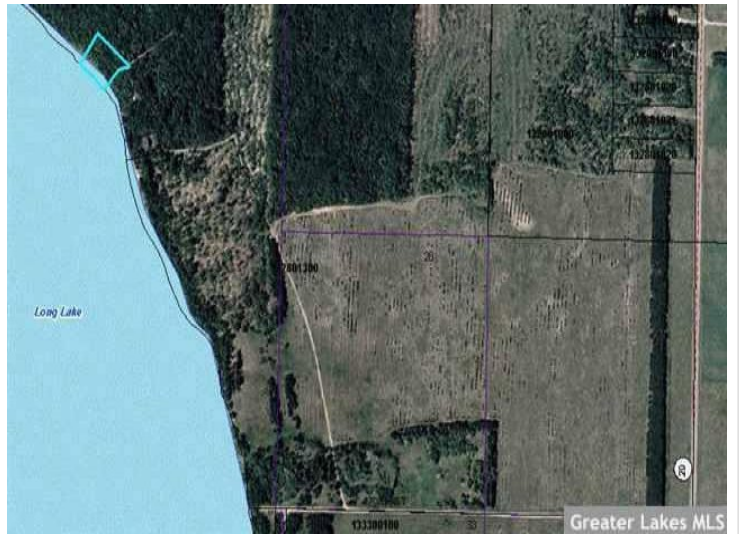


Greater Lakes MLS

website: www.AffinityRealEstate.com | email: info@affinityrealestate.com | office: 218-237-3333 | fax:218-237-3377



\$199,000
MLS 5632944 Lakeland
0 Deer Crossing Drive
Park Rapids MN 56470



website: www.AffinityRealEstate.com | email: info@affinityrealestate.com | office: 218-237-3333 | fax:218-237-3377



\$199,000
MLS 5632944 Lakeland
0 Deer Crossing Drive
Park Rapids MN 56470