



MLS 5647559 Lakeland

\$169,000

0.60 acres

0 Whitney
Nisswa MN 56468

Waterfront: Roy

(Active)

Description:

Nicely wooded building sites located on the Gull Lake Chain. Developed lots are located on a quiet dead end. Cul-de-sac, close to Nisswa, fine dining and golfing. New plat consists of 5 lots with 12 acres of common area and 1200 feet of shoreline. Additional Lots Available \$169,000-229,000. Boat slip will be provided.

Additional Features:

Lot Description: Corner Lot, Tree Coverage - Medium, Additional Land Available, Accessible Shoreline
Road Frontage: City Street, Cul De Sac, Paved Streets

Driving Directions:

From Nisswa, County Rd 77 go west 2 miles, right on Whitstrom Rd 0.5 mile to left on Whitney Court.



Listed By:
Kurilla Real Estate LTD

Affinity Real Estate Inc. participates in the Regional Multiple Listing Service of Minnesota, Inc Broker Reciprocity (sm) program, allowing us to display other broker's listings on our website. All properties are subject to prior sale, change or withdrawal.



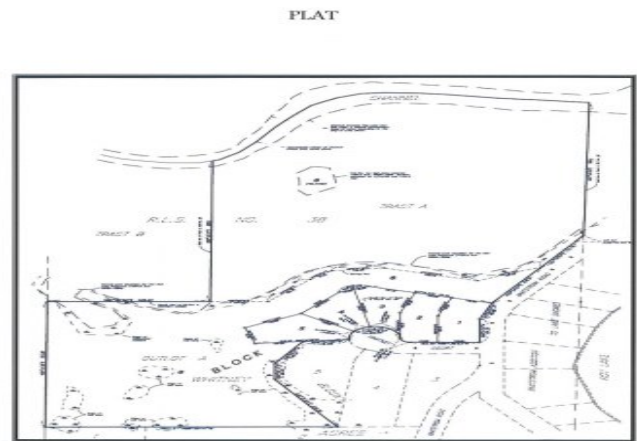
Call Affinity Real Estate

218-237-3333

info@affinityrealestate.com



Affinity Real Estate - 600 Park Avenue South - Park Rapids MN 56470



website: www.AffinityRealEstate.com | email: info@affinityrealestate.com | office: 218-237-3333 | fax:218-237-3377



\$169,000
 MLS 5647559 Lakeland
 0 Whitney
 Nisswa MN 56468