



MLS 5659019 Land

**\$112,500**

55.00 acres

0 County Rd12  
Akeley MN 56433

(Pending)

**Description:**

Excellent hunting property ( 55 acres ) with a private fishing pond, ravine, mixed vegetation ,paths and a large field. Buildable sites near main road. Deer bear grouse. 1000's of acres of public land in the area to ATV, hunt, snowmobile or just hike around. Many excellent lakes in the vicinity for fishing or watersports. Open to any builder for a cabin or year round home. Leave the noise and commotion of the big cities for the quiet and peacefulness waiting for you in beautiful Hubbard County, Minnesota !!

**Additional Details:**

Lot Acres	55.000
School District	113 - Walker-Hackensack-Akeley
Taxes	\$560
Taxes with Assessments	\$560
Tax Year	2019

**Additional Features:**

**Driving Directions:**

From Akeley: East on County Road 12 to sign on the left



Listed By:  
Timber Ghost Realty, LLC

Affinity Real Estate Inc. participates in the Regional Multiple Listing Service of Minnesota, Inc Broker Reciprocity (sm) program, allowing us to display other broker's listings on our website. All properties are subject to prior sale, change or withdrawal.



**Call Affinity Real Estate**

**218-237-3333**

**info@affinityrealestate.com**



**Affinity Real Estate - 600 Park Avenue South - Park Rapids MN 56470**





website: [www.AffinityRealEstate.com](http://www.AffinityRealEstate.com) | email: [info@affinityrealestate.com](mailto:info@affinityrealestate.com) | office: 218-237-3333 | fax:218-237-3377



**\$112,500**  
MLS 5659019 Land  
0 County Rd12  
Akeley MN 56433



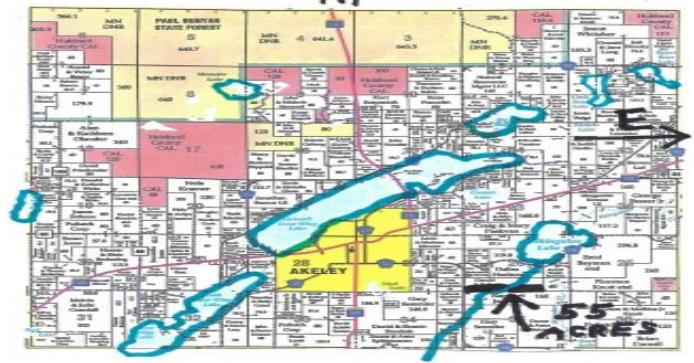


website: [www.AffinityRealEstate.com](http://www.AffinityRealEstate.com) | email: [info@affinityrealestate.com](mailto:info@affinityrealestate.com) | office: 218-237-3333 | fax:218-237-3377



**\$112,500**  
MLS 5659019 Land  
O County Rd12  
Akeley MN 56433

AKELEY TOWNSHIP  
SECTION 26 55 ACRES  
TOWNSHIP 141 HUBBARD COUNTY  
RANGE 32



website: [www.AffinityRealEstate.com](http://www.AffinityRealEstate.com) | email: [info@affinityrealestate.com](mailto:info@affinityrealestate.com) | office: 218-237-3333 | fax:218-237-3377



**\$112,500**  
MLS 5659019 Land  
0 County Rd12  
Akeley MN 56433