



MLS 5663138 Commercial

**\$1,400**

405 Beltrami  
Bemidji MN 56601

(Active)

**Description:**

Classic downtown office space in the heart of Bemidji! Wood floors, high ceilings, and 100 year old woodwork in this second level space, set up for 5 office spaces. Tenant responsible for rent, utilities, and tax proration.

**Additional Details:**

Yearbuilt	1917
Lot Acres	0.080
Lot Dimensions	25x140
School District	31
Taxes	\$4,628
Taxes with Assessments	\$4,628
Tax Year	2020

**Additional Features:**

**Exterior:** Brick/Stone **Fuel:** Natural Gas **Heat:** Forced Air **Cooling:** Central Air **Water:** City Water/Connected

**Driving Directions:**

405 Beltrami Avenue; 2nd Level



Listed By:  
Lake-N-Woods Realty, Inc.

Affinity Real Estate Inc. participates in the Regional Multiple Listing Service of Minnesota, Inc Broker Reciprocity (sm) program, allowing us to display other broker's listings on our website. All properties are subject to prior sale, change or withdrawal.



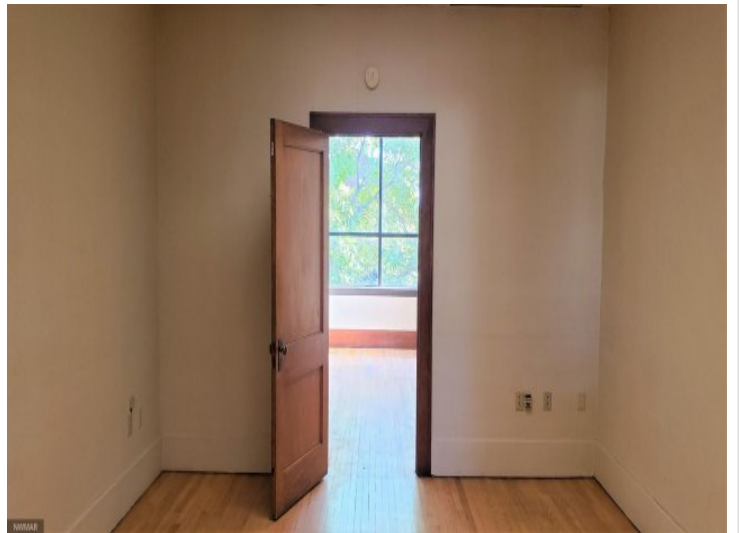
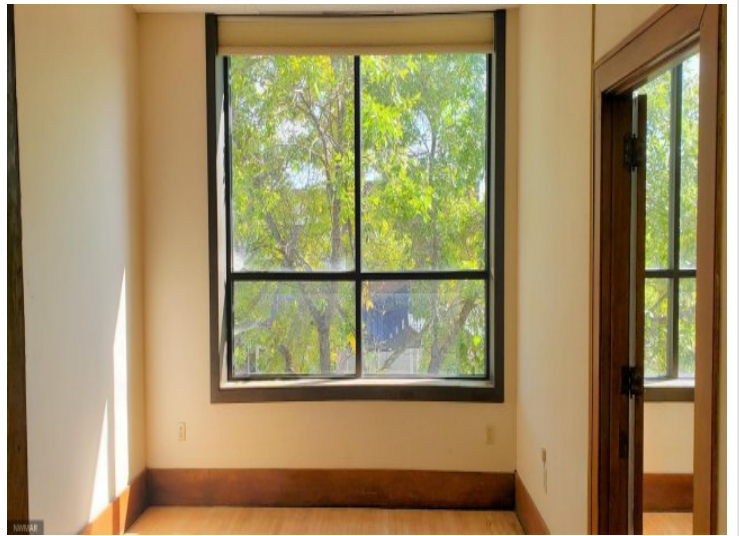
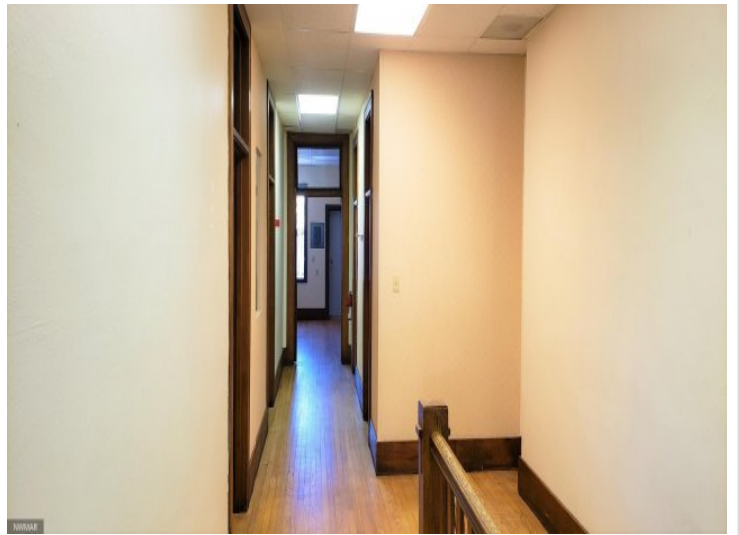
Call Affinity Real Estate

**218-237-3333**

[info@affinityrealestate.com](mailto:info@affinityrealestate.com)



Affinity Real Estate - 600 Park Avenue South - Park Rapids MN 56470



website: [www.AffinityRealEstate.com](http://www.AffinityRealEstate.com) | email: [info@affinityrealestate.com](mailto:info@affinityrealestate.com) | office: 218-237-3333 | fax:218-237-3377



**\$1,400**  
MLS 5663138 Commercial  
405 Beltrami  
Bemidji MN 56601



website: [www.AffinityRealEstate.com](http://www.AffinityRealEstate.com) | email: [info@affinityrealestate.com](mailto:info@affinityrealestate.com) | office: 218-237-3333 | fax:218-237-3377



**\$1,400**  
MLS 5663138 Commercial  
405 Beltrami  
Bemidji MN 56601