



MLS 5670598 Land

**\$204,000**

112.29 acres

44 32nd Ave.  
Pine River MN 56474

(Active)

**Description:**

+/- 112 ROLLING ACRES FOR YOU TO ENJOY. THIS WOULD MAKE A GREAT BUILDING SITE FOR A HOBBY FARM OR HUNTING AREA.

**Additional Details:**

Lot Acres	112.290
School District	2174 - Pine River-Backus
Taxes	\$902
Taxes with Assessments	\$902
Tax Year	2020

**Additional Features:**

**Lot Description :** Tree Coverage - Light

**Driving Directions:**

Pine River, South on Hwy 1, to 44th St SW. To 32nd Ave. SW Sign on corner.



Listed By:  
Gilchrist Realty

Affinity Real Estate Inc. participates in the Regional Multiple Listing Service of Minnesota, Inc Broker Reciprocity (sm) program, allowing us to display other broker's listings on our website. All properties are subject to prior sale, change or withdrawal.



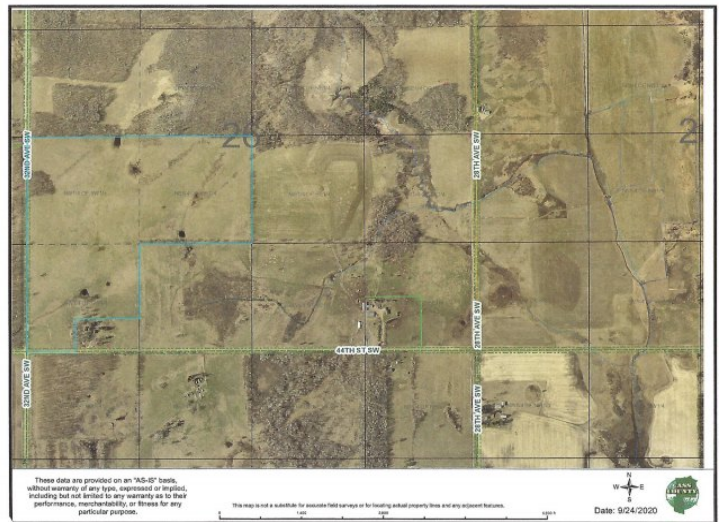
**Call Affinity Real Estate**

**218-237-3333**

**info@affinityrealestate.com**



**Affinity Real Estate - 600 Park Avenue South - Park Rapids MN 56470**



website: [www.AffinityRealEstate.com](http://www.AffinityRealEstate.com) | email: [info@affinityrealestate.com](mailto:info@affinityrealestate.com) | office: 218-237-3333 | fax: 218-237-3377



**\$204,000**  
 MLS 5670598 Land  
 44 32nd Ave.  
 Pine River MN 56474

website: [www.AffinityRealEstate.com](http://www.AffinityRealEstate.com) | email: [info@affinityrealestate.com](mailto:info@affinityrealestate.com) | office: 218-237-3333 | fax:218-237-3377



**\$204,000**  
MLS 5670598 Land  
44 32nd Ave.  
Pine River MN 56474