



MLS 5671006 Lakeland

**\$500,000**

505.80 acres

3540 County 1  
Pine River MN 56474

Waterfront: Mosquito Creek

(Active)

**Description:**

Looking for some of the most incredible hunting and recreational land in the area? 500 acres located just 2 miles south of Pine River. Mixture of old growth hardwoods, aspen, conifers, Tamarack and wetlands. Established roads put in with bulldozer for ease of navigation. Hay creek runs through the property. Borders 840 acres of public land to the south, much of which is landlocked and hard to navigate other than through this property. Established shooting lanes that have proven to be successful for decades.

**Additional Features:**

**Driving Directions:**

From Hwy 371 in Pine River, south on County Rd 1 for 2.6 miles, to property on your left. Use 3543 Co Hwy 1, Pine River, MN 56474 for navigation purposes which is a gravel pit on West side of county road.



Listed By:  
LakePlace.com-Crosslake

Affinity Real Estate Inc. participates in the Regional Multiple Listing Service of Minnesota, Inc Broker Reciprocity (sm) program, allowing us to display other broker's listings on our website. All properties are subject to prior sale, change or withdrawal.



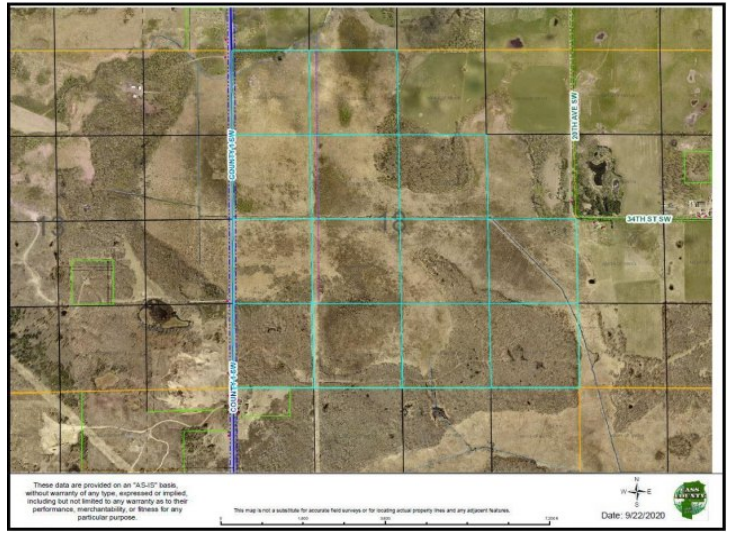
**Call Affinity Real Estate**

**218-237-3333**

**info@affinityrealestate.com**



**Affinity Real Estate - 600 Park Avenue South - Park Rapids MN 56470**



website: [www.AffinityRealEstate.com](http://www.AffinityRealEstate.com) | email: [info@affinityrealestate.com](mailto:info@affinityrealestate.com) | office: 218-237-3333 | fax:218-237-3377



**\$500,000**  
MLS 5671006 Lakeland  
3540 County 1  
Pine River MN 56474



website: [www.AffinityRealEstate.com](http://www.AffinityRealEstate.com) | email: [info@affinityrealestate.com](mailto:info@affinityrealestate.com) | office: 218-237-3333 | fax:218-237-3377



**\$500,000**  
MLS 5671006 Lakeland  
3540 County 1  
Pine River MN 56474