



MLS 5703838 Lakeland

\$462,000

2.46 acres

0 Lower Ten Mile Lake Road
Hackensack MN 56452

Waterfront: Ten Mile

(Active)

Description:

Must see 2.46 acre lot on Ten Mile lake with towering pines, 126 feet of shoreline and level sand beach!

Additional Features:

Lot Description: Tree Coverage - Medium
Road Frontage: Private Road

Driving Directions:

Hwy 371 2 miles N of Hackensack, Left on County Road 6 (Lower Ten Mile Lake Rd) for 5 miles, Right on Northwoods Way NW, lot is #38xx to West of #3836.



Listed By:
Exit Lakes Realty Premier

Affinity Real Estate Inc. participates in the Regional Multiple Listing Service of Minnesota, Inc Broker Reciprocity (sm) program, allowing us to display other broker's listings on our website. All properties are subject to prior sale, change or withdrawal.



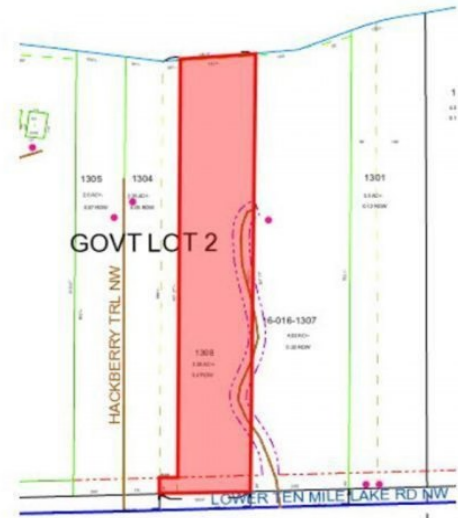
Call Affinity Real Estate

218-237-3333

info@affinityrealestate.com



Affinity Real Estate - 600 Park Avenue South - Park Rapids MN 56470



website: www.AffinityRealEstate.com | email: info@affinityrealestate.com | office: 218-237-3333 | fax:218-237-3377



\$462,000
MLS 5703838 Lakeland
0 Lower Ten Mile Lake Road
Hackensack MN 56452



website: www.AffinityRealEstate.com | email: info@affinityrealestate.com | office: 218-237-3333 | fax:218-237-3377



\$462,000
MLS 5703838 Lakeland
0 Lower Ten Mile Lake Road
Hackensack MN 56452