



MLS 5763232 Commercial

\$1,000

323 Beltrami
Bemidji MN 56601

(Active)

Description:

Approximately 910 SF of updated office or retail space in the heart of downtown! Excellent exposure on the corner of 4th and Beltrami, this affordable space has large reception/office area with spacious conference room adjacent. See space plan in Documents. \$1000/month gross lease, with three year minimum.

Additional Details:

Yearbuilt	1937
Lot Acres	0.080
Lot Dimensions	25x140
School District	31
Taxes	\$6,230
Taxes with Assessments	\$6,230
Tax Year	2020

Additional Features:

Exterior: Brick/Stone **Fuel:** Natural Gas **Heat:** Forced Air **Cooling:** Central Air **Water:** City Water/Connected

Driving Directions:

SW Corner of 4th Street NW and Beltrami Ave NW



Listed By:
Lake-N-Woods Realty, Inc.

Affinity Real Estate Inc. participates in the Regional Multiple Listing Service of Minnesota, Inc Broker Reciprocity (sm) program, allowing us to display other broker's listings on our website. All properties are subject to prior sale, change or withdrawal.



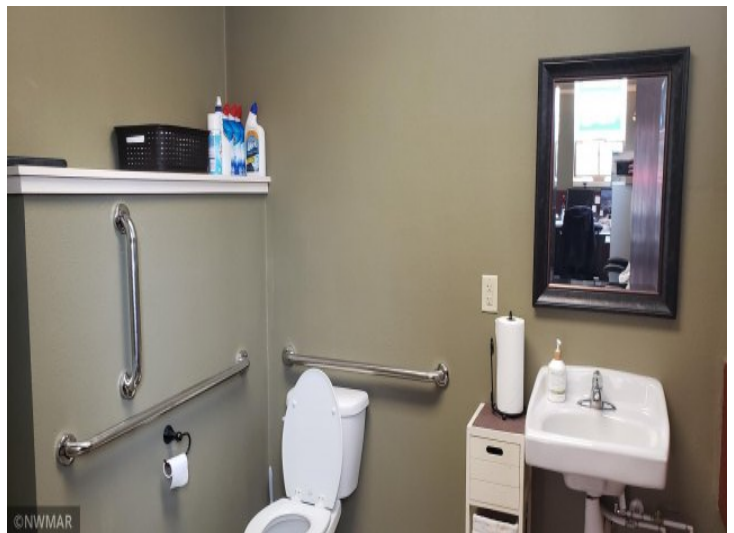
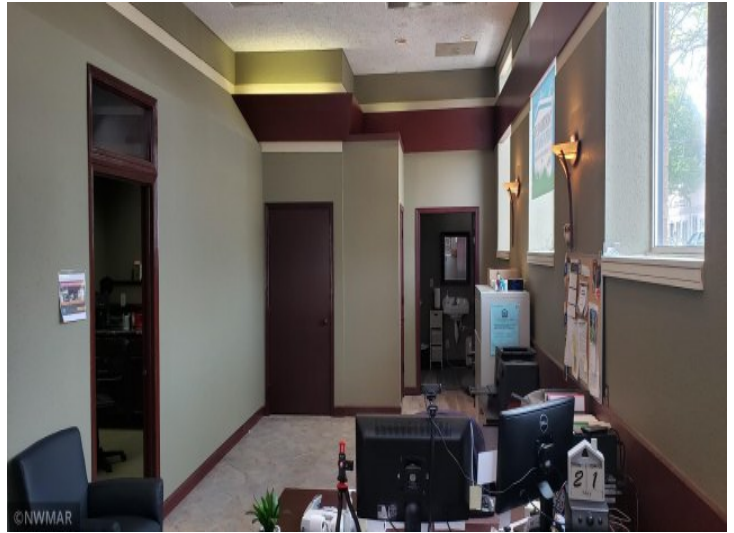
Call Affinity Real Estate

218-237-3333

info@affinityrealestate.com



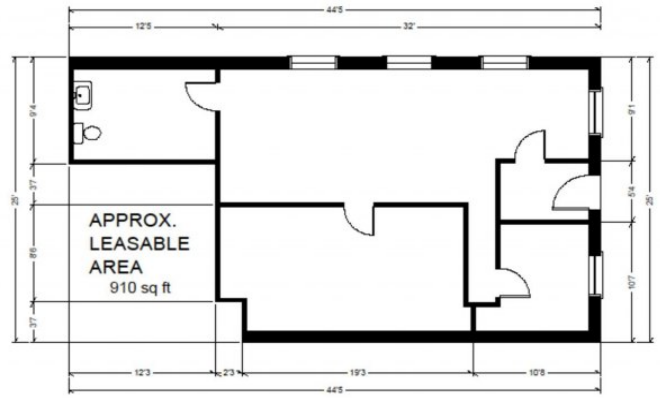
Affinity Real Estate - 600 Park Avenue South - Park Rapids MN 56470



website: www.AffinityRealEstate.com | email: info@affinityrealestate.com | office: 218-237-3333 | fax: 218-237-3377

Affinity
REAL ESTATE INC

\$1,000
MLS 5763232 Commercial
323 Beltrami
Bemidji MN 56601



website: www.AffinityRealEstate.com | email: info@affinityrealestate.com | office: 218-237-3333 | fax:218-237-3377



\$1,000
MLS 5763232 Commercial
323 Beltrami
Bemidji MN 56601