



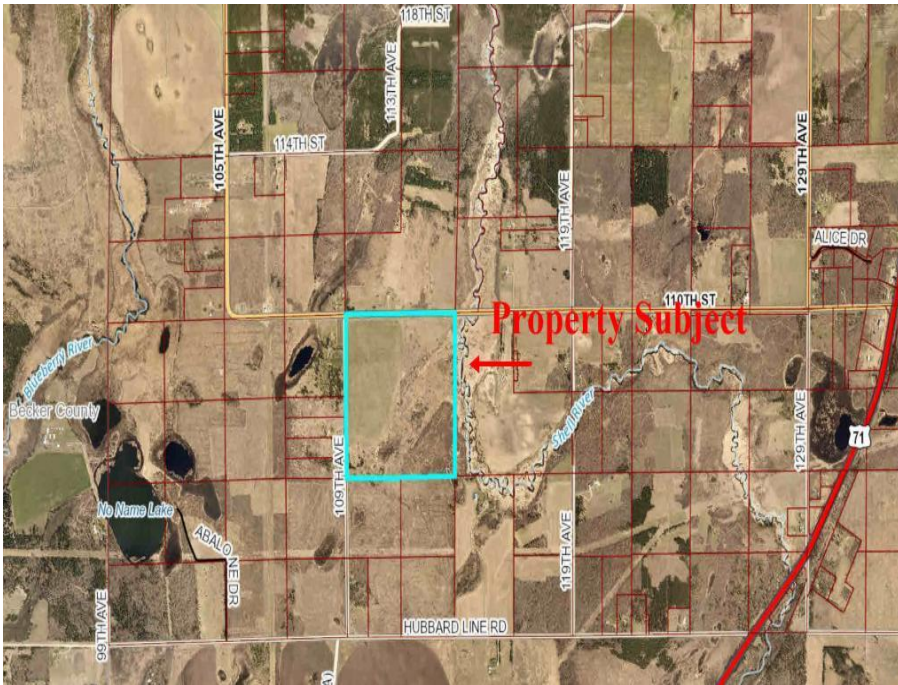
MLS 5287174 Land

\$324,500

160.00 acres

10576 109th
Park Rapids MN 56464

(Active)



Description:

Excellent opportunity to own 160+/- acres! This acreage provides many different options for use. Featuring 70 acres of tillable ground, 70 acres of wooded and low ground fenced for animals. A great 3 acre building site rounds this property out. Whether you're looking for agricultural land, or a great hunting property this is it! Contract for Deed!

Additional Details:

Lot Acres	160.000
School District	821 - Menahga
Taxes	\$1,556
Taxes with Assessments	\$1,556
Tax Year	2019

Additional Features:

Lot Description : Corner Lot, Tree Coverage - Medium

Driving Directions:

From 34/71 in Park Rapids, South on 71 for 7 miles to a right onto 110th St. Follow for 2.3 miles to a left onto 109th Ave. Property on left.



Listed By:
Wolff & Simon Real Estate

Affinity Real Estate Inc. participates in the Regional Multiple Listing Service of Minnesota, Inc Broker Reciprocity (sm) program, allowing us to display other broker's listings on our website. All properties are subject to prior sale, change or withdrawal.



Call Affinity Real Estate

218-237-3333

info@affinityrealestate.com



Affinity Real Estate - 600 Park Avenue South - Park Rapids MN 56470