

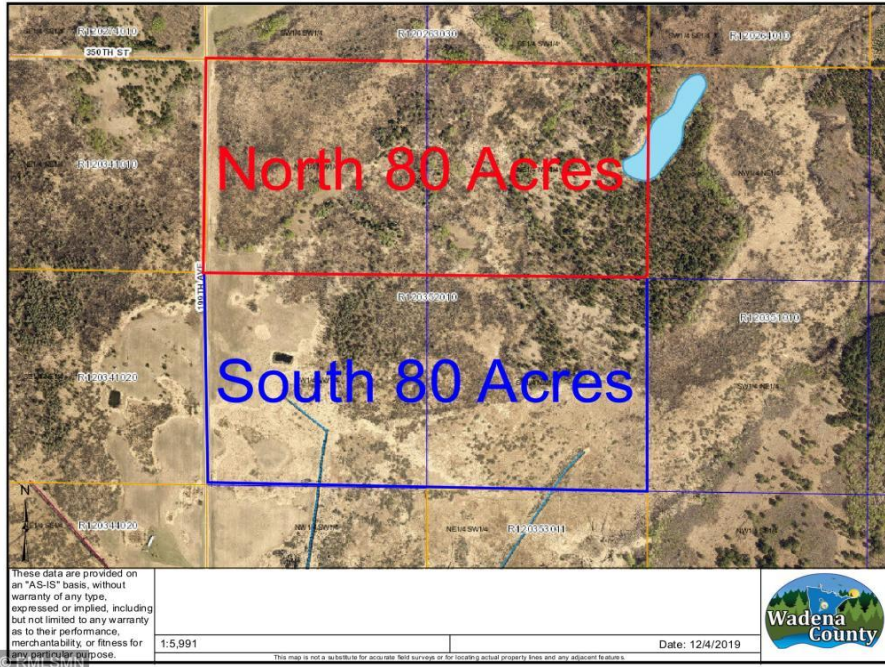


MLS 5337229 Land

**\$89,900**

80.00 acres  
Raw Land

20098 340th Street  
Menahga MN 56464



(Active)

**Description:**

80 acres of hunting acreage. Approximately 40 acres wooded. Access off of 199th Ave and borders 440 acres of state land to the East. Bordering 80 acres to the North also for sale.

**Additional Details:**

Lot Acres	80.000
Topography	Rolling,Low Land,High Ground
Development Status	Raw Land
School District	821 - Menahga
Taxes	\$3,148
Taxes with Assessments	\$3,208
Tax Year	2019

**Additional Features:**

**Improvements** : None **Land Inclusions** : Abstract, For Sale Sign **Lot Description** : Tree Coverage - Medium, Property Adjoins Public Land  
**Topography** : Rolling, Low Land, High Ground **Pasture Acres** : 40.000 **Soil Type** : Sand, Clay **On Site Utilities** : None

**Driving Directions:**

From Hwy 71/34 in Park Rapids, go South on Hwy 71, turn left onto 87, turn right onto County 6, continue onto Hubbard Road, turn left onto 340th St, turn left onto 199th Ave, property will be on right.



Listed By:  
RE/MAX First Choice

Affinity Real Estate Inc. participates in the Regional Multiple Listing Service of Minnesota, Inc Broker Reciprocity (sm) program, allowing us to display other broker's listings on our website. All properties are subject to prior sale, change or withdrawal.



Call Affinity Real Estate

**218-237-3333**

[info@affinityrealestate.com](mailto:info@affinityrealestate.com)



Affinity Real Estate - 600 Park Avenue South - Park Rapids MN 56470