



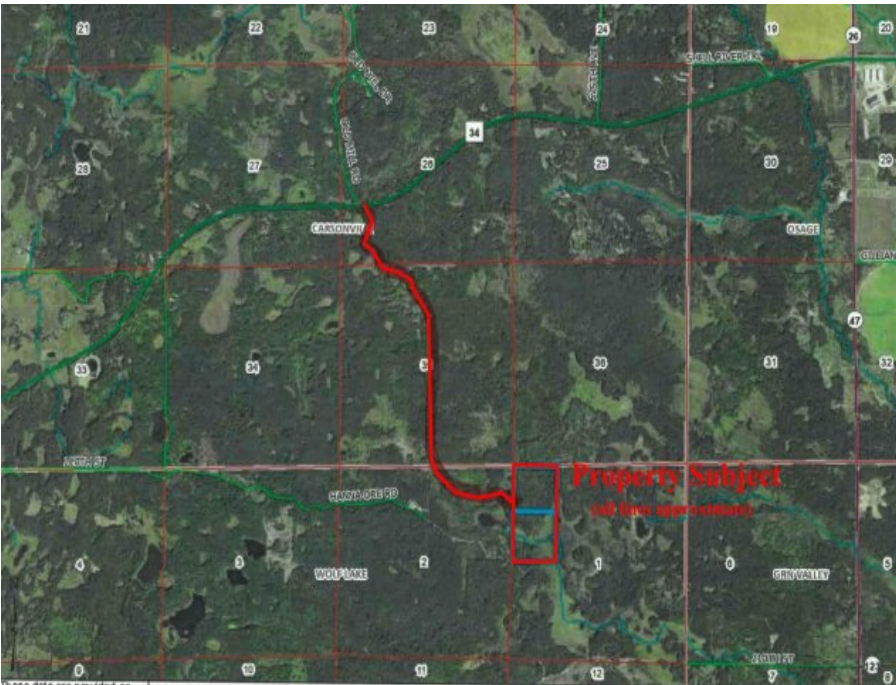
MLS 6025970 Land

\$149,900

76.80 acres

0 Navillus Forest Land
Wolf Lake MN 56593

(Pending)



Description:

Located in the middle of the Smokey Hills State Forest, this 76.8 acre tract offers the ultimate in privacy. Contiguous to hundreds of acres of Becker County tax forfeited land. Rolling hills, great mixture of tree cover and lots of hunt-able acreage awaits you!

Additional Details:

Lot Acres	76.800
School District	309 - Park Rapids
Taxes	\$922
Taxes with Assessments	\$922
Tax Year	2020

Additional Features:

Road Frontage: Unimproved, Forest Service

Driving Directions:

From 34/71 in Park Rapids, West on 34 through Osage to Navillus Forest Road. Left on Navillus Forest Road to the "T". Left at sign and right turn to the property.



Listed By:
Wolff & Simon Real Estate

Affinity Real Estate Inc. participates in the Regional Multiple Listing Service of Minnesota, Inc Broker Reciprocity (sm) program, allowing us to display other broker's listings on our website. All properties are subject to prior sale, change or withdrawal.



Call Affinity Real Estate

218-237-3333

info@affinityrealestate.com



Affinity Real Estate - 600 Park Avenue South - Park Rapids MN 56470